

Big RED Shed!

After more than 20 years at our previous Gold Coast & Logan Office, GDP have moved into a brand new building within Access Business Park, Yatala.

Our team of 23 staff are excited to be working within a purpose-built facility that can accommodate all of our planning, environmental, design and surveying functions.

Even more exciting is the way in which our new premises have given us greater capacity to service our diverse Client group, and deliver innovative outcomes.

So if you're motoring up or down the M1, feel free to drop in for a coffee, chat, and guided tour!



GDP staff win planning award!

Town Planners Richelle Nielsen and Melissa Ross were part of a team that won the Planning Institute of Australia's state and national awards for a student project.



Their project involved the preparation of a Master Plan for Brisbane Airport's Banksia Place, the area opposite the International Terminal on Airport Drive. The land uses were selected on the basis of creating a memorable and iconic urban environment, underpinned by ensuring social, environmental and economic sustainability at every stage of the development.

They were presented with their national award at an evening function at the PIA Congress in Darwin.

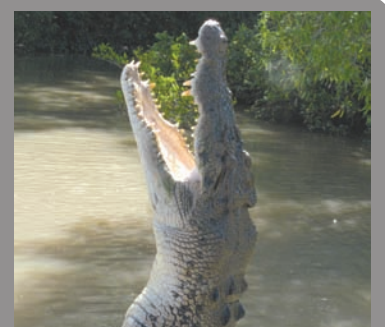
GDP congratulates Richelle and Melissa on their fantastic achievement!



Exploring New Horizons

Late last month, GDP were represented at the Planning Institute of Australia's National Congress by our Senior Town Planner, David Kretchmann, and Town Planners Richelle Nielsen and Melissa Ross.

Held in multicultural Darwin, the conference attracted over 500 delegates and an eminent line up of speakers ranging from Paul Farmer, CEO of the American Planning Association, to Ted Egan AO, a Northern Territory Icon.



The congress confronted a number of planning mistakes from the past and presented sometimes radical solutions where we as planners can make a positive difference, and this ranged from transit oriented development through to planning in indigenous communities.

A 50km² solar panel is all it will take to provide energy for every Australian!

Greening the roads

Fulton Hogan, a multi-national resource based civil contracting company, recently engaged GDP to assist in establishing a 'green' asphalt manufacturing plant on the Gold Coast. Established in New Zealand in 1933, and operating in Australia since 1981, Fulton Hogan had outgrown their existing plant at Yatala and needed to move to a larger and much more efficient facility.

30% less energy use and reductions in dust emissions of more than 50%.

GDP has partnered with Fulton Hogan in delivering this project from the start, obtaining a range of planning and environmental approvals and licenses, along with preparing both Landscape and Environmental Management Plans associated with the operation of the facility.



The new \$13 million plant at Ormeau features a 'state of the art' Astec Double Barrel Green System of asphalt production. This system produces warm mix asphalt, a more environmentally sensitive product, with 30% less carbon dioxide emissions.

New Staff Additions!

GDP are pleased to welcome Matthew Rissman and Philippa Yardley as new members of our team.

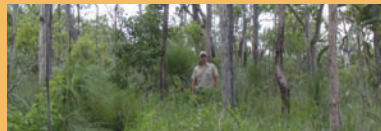
Matt is both a Landscape Architect and Environmental Management professional specialising in natural areas, revegetation, soil biology and sustainable land use.

His professional knowledge of the natural environment systems and processes is combined with experience and an understanding of the development, construction and landscape industry.

Matt is responsible for preparing environmental assessments, management plans and environmental designs for a range of our projects.

Philippa is a licensed surveyor in both Queensland and New Zealand with 10 years experience in both local government and private consultancy. Her background covers detail, engineering and cadastral survey projects.

She has a strong ethic of providing timely and accurate results for projects under her supervision, and also brings a different perspective and objectivity to her role having previously worked as a surveyor in Ireland, England and the United States.



GDP Goes West

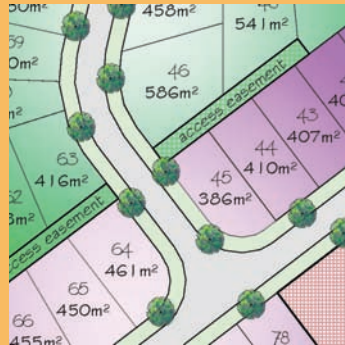
Substantial emphasis on growth and urban development has been placed on the Western Corridor in Brisbane's western outskirts, in turn resulting in sustained population and employment growth within the area.

GDP has been playing a role in supporting such growth through involvement in several projects throughout the region.

GDP was responsible for the preparation and management of all town planning and environmentally relevant activity permits for a new concrete batching plant.



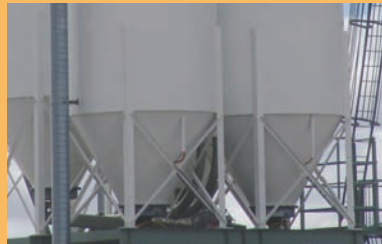
Residential supply is also being increased with GDP's partnership with Mosaic Developments. A 108 lot subdivision at Flinders View encompassing multiple approvals is currently before Council.



The development provides for affordable, innovatively designed small lot housing. Council is currently assessing the application, with a decision expected in August 2009.

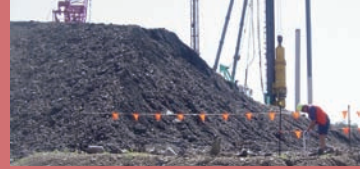


The plant shall meet the increased demands on construction materials in the Western Corridor.



Gateway North Resumption Survey (Brisbane Airport)

Often as we drive along a road corridor we marvel at the different structures that have been constructed to make our trip quicker and easier. In South East Queensland we have the Gateway Bridge, the Tugun Bypass and in the not too distant future the Clem 7 Tunnel under the Brisbane River just to mention a few. Whilst the construction of this infrastructure is impressive and visible for all to see spare a thought for the work that goes into creating the Land Titling that allow entities to own and operate these roads.



In December 2008, GDP won the contract to carry out the Resumption Surveys for the section of the Gateway North Arterial currently being constructed through Brisbane Airport.

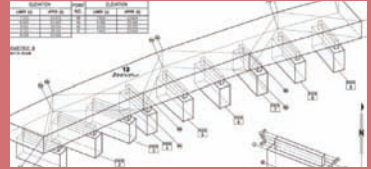


The survey was carried out using state of the art Robotic Total Stations which can measure to any object without the need of a surveyor's assistant holding up a measuring target.

Part of our survey involved the creation of a Volumetric Parcel of Land to encompass the bridge being built spanning the main access road to the Airport. This required GDP to survey the external shape of the Bridge Deck, the Pile Caps and the supporting columns.

This information was then translated into a three dimensional shape depicting the shape of the bridge.

From here we calculated the volume of the parcel, and drafted the isometric view below.

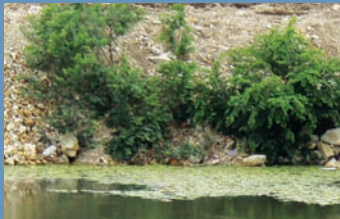


When it rains it pours!

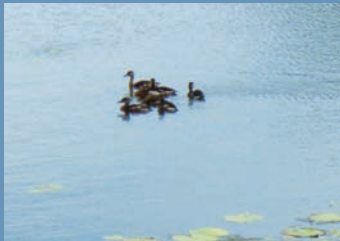
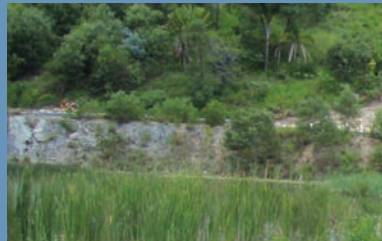


Nowhere is this more salient than with GDP's involvement with the expansion of TriCare's Stafford Heights Retirement Village.

GDP's environmental team has been engaged by TriCare to undertake an ongoing environmental monitoring program of the development's bulk earthwork sediment and erosion controls. The monitoring acts as a critical component of the development's environmental compliance, and is instrumental in not only satisfying the project's desired environmental outcomes, but also in effectively communicating critical issues and solutions to the project's stakeholders.



Undertaking a monitoring program for such a large and unique development is challenging, yet enjoyable for us. On the one hand is dealing with the challenges of SEQ's unpredictable weather patterns, whilst on the other hand is the satisfaction derived in being able to meaningfully contribute to an environmentally responsive residential development in Brisbane.



SEQ's draft Regional Plan review



Following greater than expected population growth, a review of the SEQ Regional Plan was fast-tracked and finished public display on May 1.

A key addition to the draft Regional Plan is the addition of a Metropolitan Development Program that will annually report to the industry on development activity, land supply and broad infrastructure needs.

In turn, the state expects to use this information to release identified master planned or growth areas for development.

GDP has been involved in the broader review of the draft Regional Plan, and prepared submissions on behalf of a number of clients. Staff also attended a recent Planning Institute of Australia seminar to hear of views of the plan from some key interest groups.

Following review of submissions, the Regional Plan shall be released later in the year.

45% of the new dwellings in SEQ by 2031 will be infill

DID YOU KNOW?

GDP now has a comprehensive landscape design capability, consisting of:

- Conceptual design
- Statements of landscape intent
- Detailed landscape design

quick and efficient design products that are capably prepared at a cost effective price. In collaboration with our environmental team, GDP provides a holistic approach to landscape design that meets the needs and demands of an ever-changing marketplace.

Our landscape design services provide Please see attached pamphlet.



Web www.gassman.com.au
Email mail@gassman.com.au
Post PO Box 392 Beenleigh Q 4207
A.B.N 62 010 752 388

Gold Coast & Logan Office
 Access Business Park
 76 Business Street Yatala Q 4207
Phone (07) 3807 3333
Fax (07) 3287 5461

Brisbane & Regional QLD Office
 Level 24 AMP Place
 10 Eagle Street Brisbane Q 4000
Phone (07) 3303 0817
Fax (07) 3303 0827



LANDSCAPE architecture

GDP's Landscape services include:

Conceptual Landscape Design & Site Analysis

Why is it needed?

- Clearly defines aims and objectives that will guide and influence the proposed development through to completion.

When is it needed?

- A planning and design tool required at the early stages, often prior to submission of an application, as part of a Detailed Planning Review or as part of a Development Approval stage for applications such as MCU and ROL.
- This stage of design takes into consideration the principles of Ecologically Sustainable Development and the existing site conditions. Preliminary reports such as Vegetation Survey, Ecological Assessment or Environmental Impact Statement are used as a guide through this process.

What does it contain?

- Conceptual design includes a site layout plan incorporating different land use areas and the relationships/ interface / interactions between these areas and how they integrate into the existing landscape with consideration for maintaining ecological and natural landscape processes.



Landscape Intent

Why is it needed?

- Landscape Intent Plans refine the aim and objectives set out at the concept stage and nominate areas for mass planting, hard and soft landscape elements

When is it needed?

- Required at the development approval stage for Material Change of Use and Reconfiguration of a Lot applications. In some cases, Landscape Intent Plans can also be used for Operational Works approval.
- This stage of the design process includes the selection of plant species best suited to the development known as the 'planting palette'.

What does it contain?

- Landscape Intent Plans nominate a range of materials to be used in the landscape such as surface treatments, paving, seating and hard landscape features with a focus on colour, form texture etc. that compliment the 'plant palette' and contribute to the overall appearance of the development.



Detailed Landscape Design

Why is it needed?

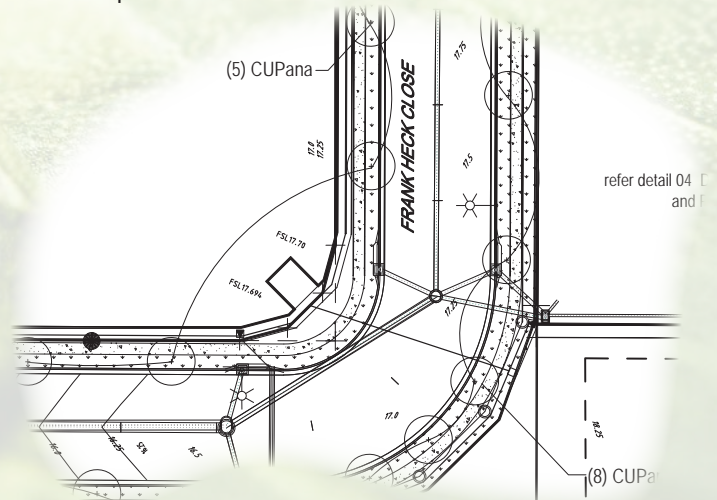
- Assists to achieve the realization of the overall aims and objectives of the development

When is it needed?

- Required at the Operational Works stage of development approval and is guided by the plant palette, materials and layout of the Landscape Intent Plan

What does it contain?

- Contains landscape construction and set out detail as well as quantities of plants and materials used in the landscape to guide on-ground construction activities
- The detailed design can include sectional-elevations, details, construction details and perspectives to show the intent of the design once built.
- Contains written landscape specifications comprising materials, preparation requirements and construction methods
- Contains the maintenance requirements, time frames and performance criteria for handover of landscaped or rehabilitated area to the responsibility of council



We welcome projects that offer complex and innovative challenges.

